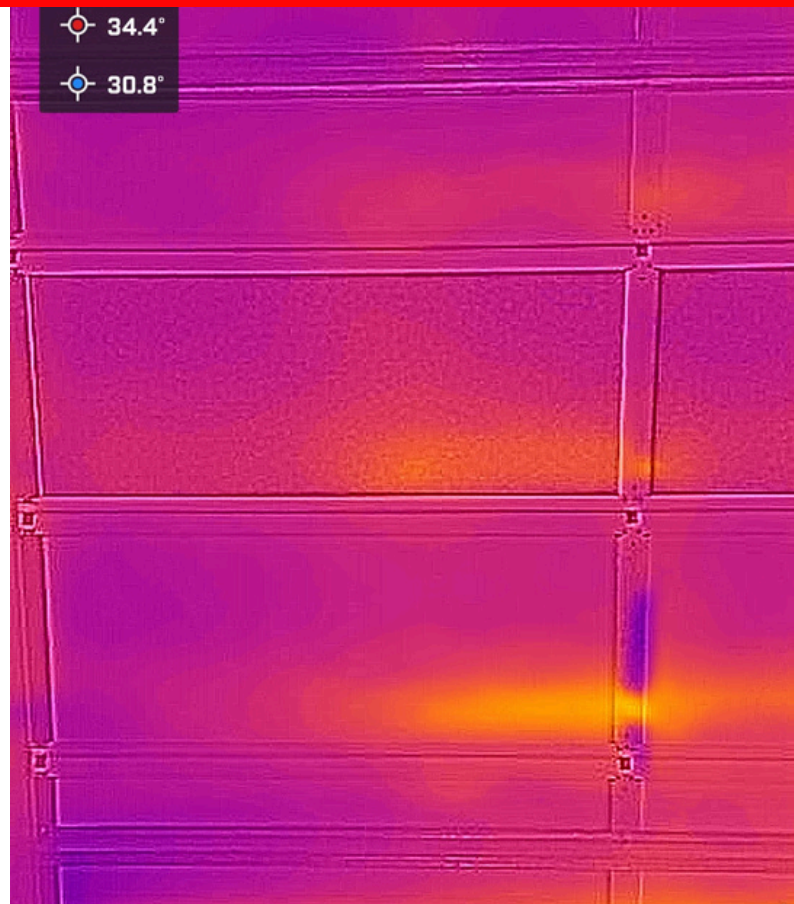




Before: 44.7°C surface temperature  
Captured at 28°C ambient temperature, Sunshine Coast QLD



After: 30.8°C surface temperature  
Captured at 28°C ambient temperature, Sunshine Coast QLD

## Why This Matters for Your NDIS Report

### The Functional Impact

*For participants with Multiple Sclerosis, Spinal Cord Injury, Traumatic Brain Injury, or sensory processing differences, an uninsulated garage door is not a comfort issue. It is a functional barrier. Surface temperatures exceeding 44°C directly impair thermoregulation, concentration, mobility, and independence.*

### Evidence Base

*ThermaDoor provides independently verified assembly R-values of R1.43 (winter) and R1.39 (summer) under AS/NZS 4859.1/2:2018. These are assembly R-values, not material R-values. An independent engineering report is available on request to support your NDIA submission.*

*"The temperature in the garage and the room above has made a significant difference. My son uses the garage as his personal space and the heat was becoming unbearable. Since ThermaDoor was installed, he can use it comfortably and his support team can work with him in there. It has genuinely changed how he uses his home."*

**Deborah Ross, Mountain Creek QLD — NDIS participant's mother**

## How to Use This Information Pack

For Occupational Therapists preparing NDIS Home Modification reports

### Step 1 — Confirm Eligibility

Check that the participant has a disability that affects thermoregulation, heat sensitivity, or ability to safely use their home environment. Relevant diagnoses include MS, SCI, TBI, autism, and sensory processing disorders.

### Step 2 — Document Functional Impact

Record how garage heat affects the participant's daily function, independence, and support needs. Note any incidents, support hours, or activities restricted due to temperature. The FLIR data on Page 1 may be cited as supporting evidence.

### Step 3 — Reference the R-Value Data

ThermaDoor's independently verified assembly R-values (R1.43 winter / R1.39 summer) under AS/NZS 4859.1/2:2018 provide the technical evidence base for your report. An independent engineering report is available on request.

### Step 4 — Submit with Your AT Report

Include this pack as a supporting document with your Assistive Technology or Home Modification report. For product specifications, pricing, or an engineering report, contact ThermaDoor directly.

## Does This Meet the 'Reasonable and Necessary' Test?

Under Section 34 of the NDIS Act, supports must be reasonable and necessary. Garage door insulation meets this test where the participant's disability directly affects their ability to safely occupy or use their home environment due to heat. ThermaDoor's independently verified R-values, FLIR thermal imaging data, and case study evidence provide the objective foundation an OT needs to make this case.

### Ready to support your client's NDIS application?

Contact ThermaDoor for product specifications, R-value documentation, or an independent engineering report.

07 5452 4378 | [info@thermadoor.com.au](mailto:info@thermadoor.com.au) | [thermadoor.com.au](http://thermadoor.com.au)